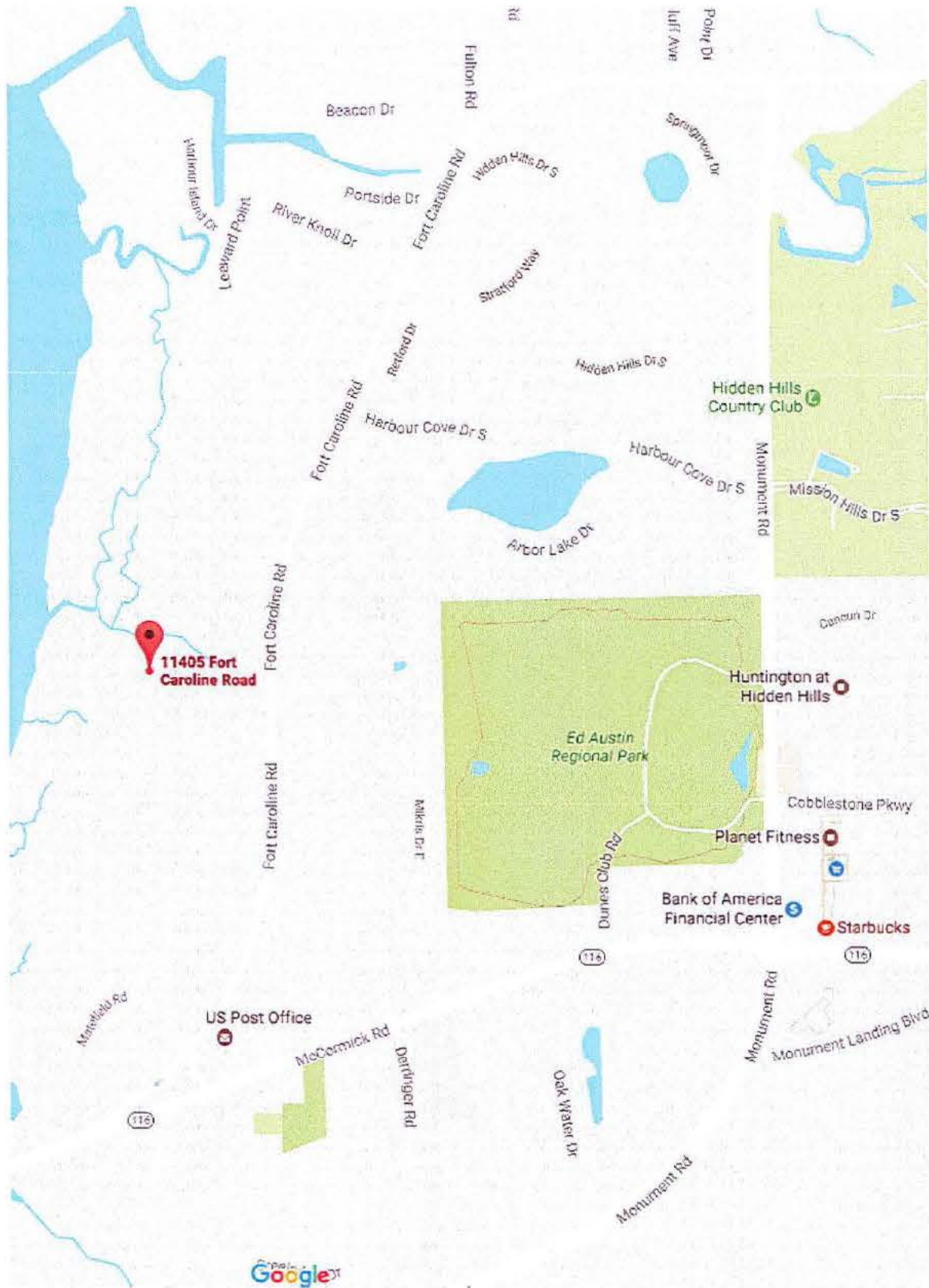
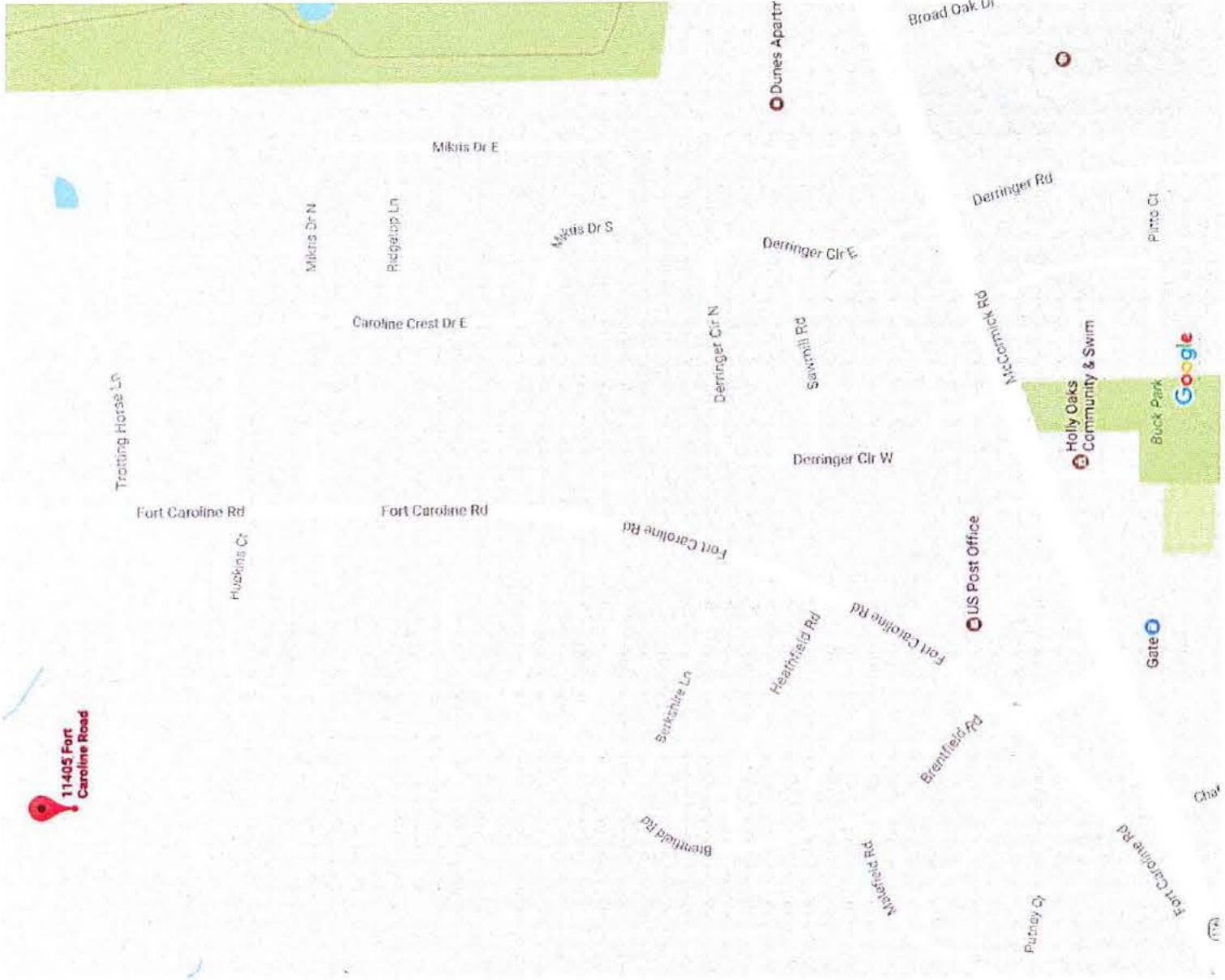
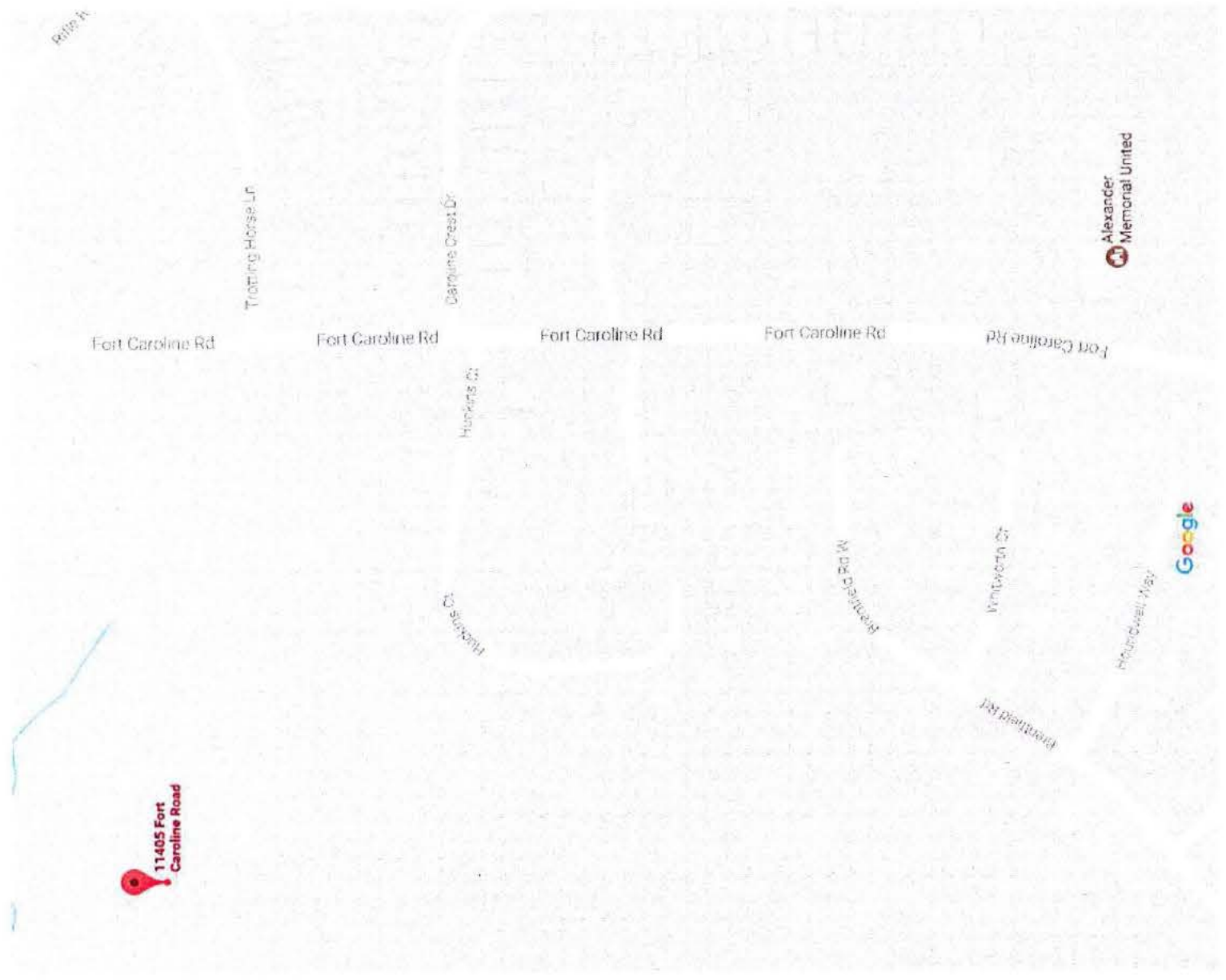


Item A: Vicinity Location Map

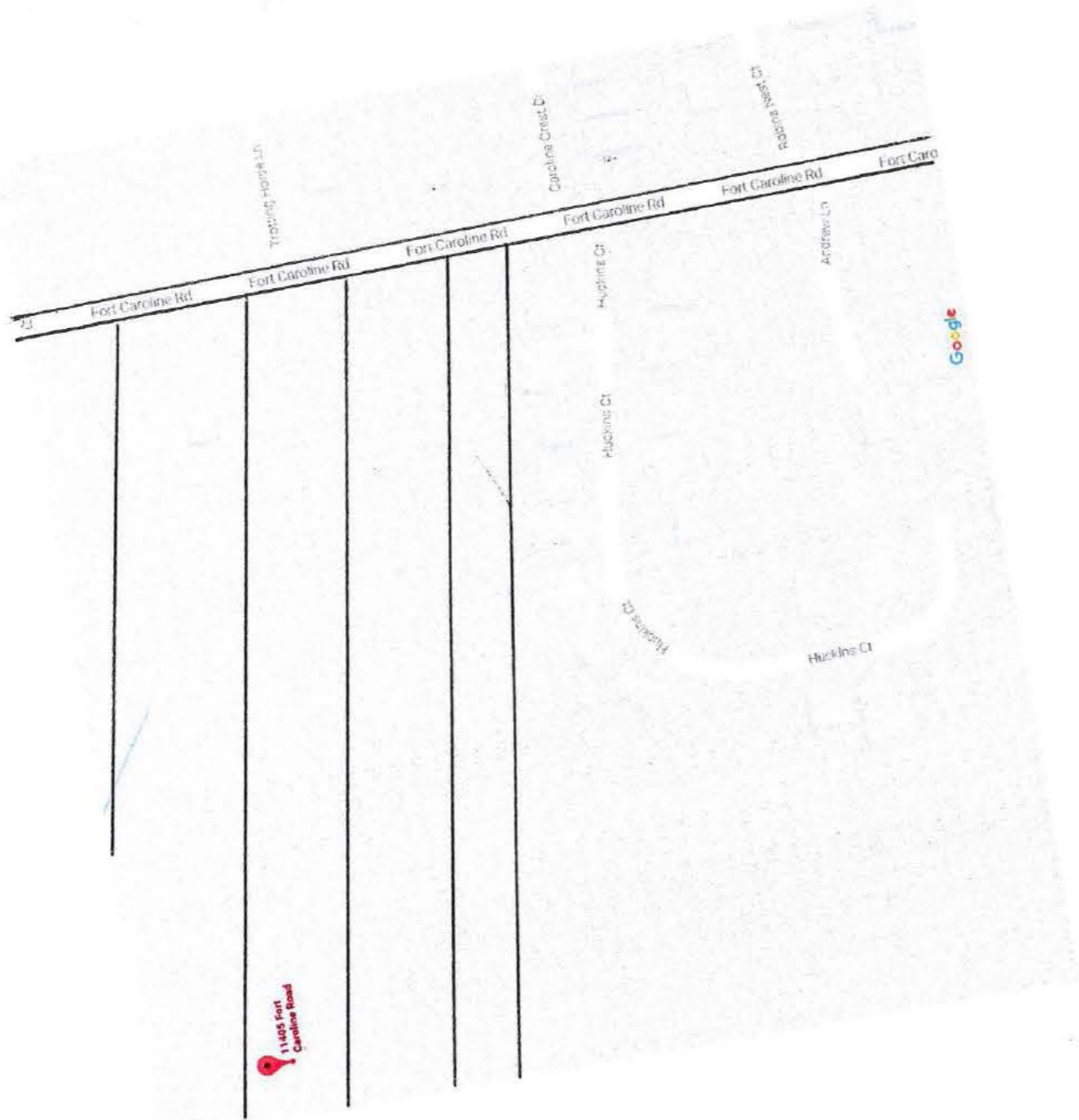




Page 2 of 4



Page 3 of 4

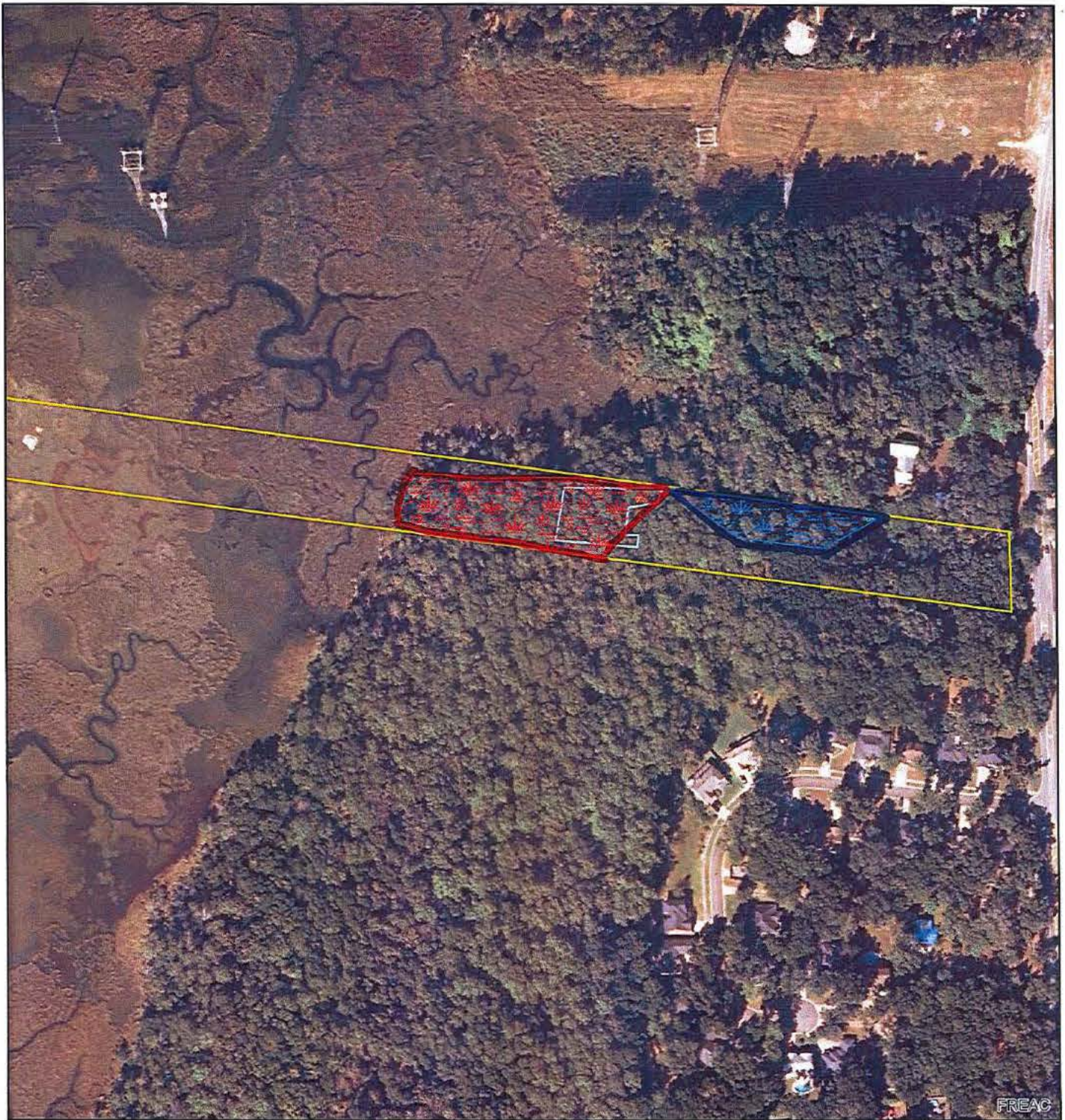


Page 4 of 4

Item D:

11405 Fort Caroline Road





Location and Extent of Predevelopment Wetlands



FREAC

This map is for informational purposes only and it does not bind the Department, its agents, or employees, nor does it convey any legal rights expressly or implied.



-  Approximate jurisdictional wetland boundary- not filled
-  Approximate property boundary
-  Approximate jurisdictional wetland boundary- unauthorized fill area 1.06 acres
-  Approximate footprint of home

0 65 130 260 390 520 Feet

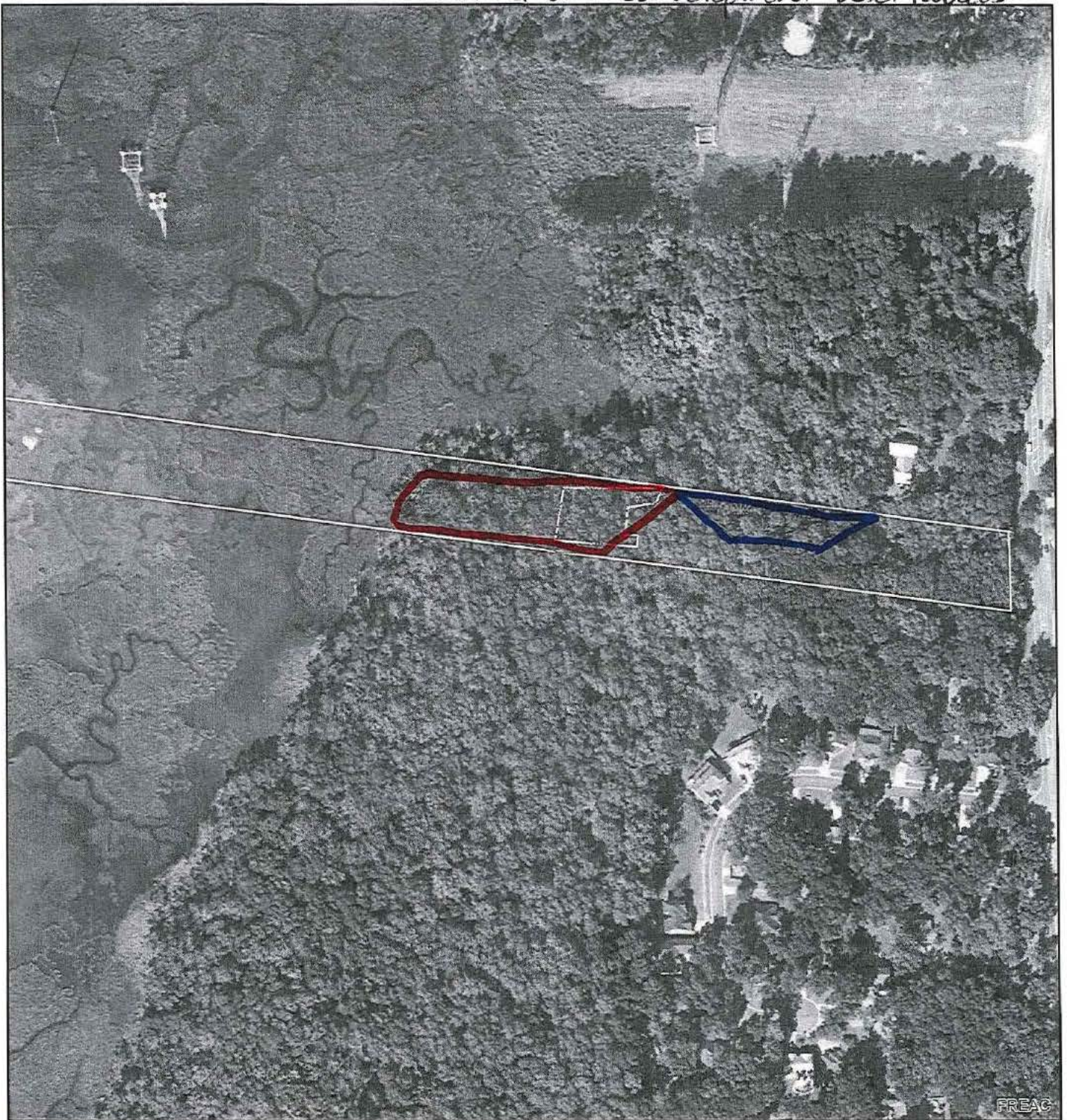
Source: FDEP - Northeast District

Created by: Chrissy Sellers

April 21, 2016

11405 Fort Caroline Road

Item D: Location and Extent of Predevelopment Wetlands



This map is for informational purposes only and it does not bind the Department, its agents, or employees, nor does it convey any legal rights expressly or implied.



Approximate jurisdictional wetland boundary- not filled

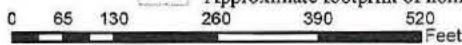
Approximate property boundary



Approximate jurisdictional wetland boundary- unauthorized fill area 1.06 acres



Approximate footprint of home



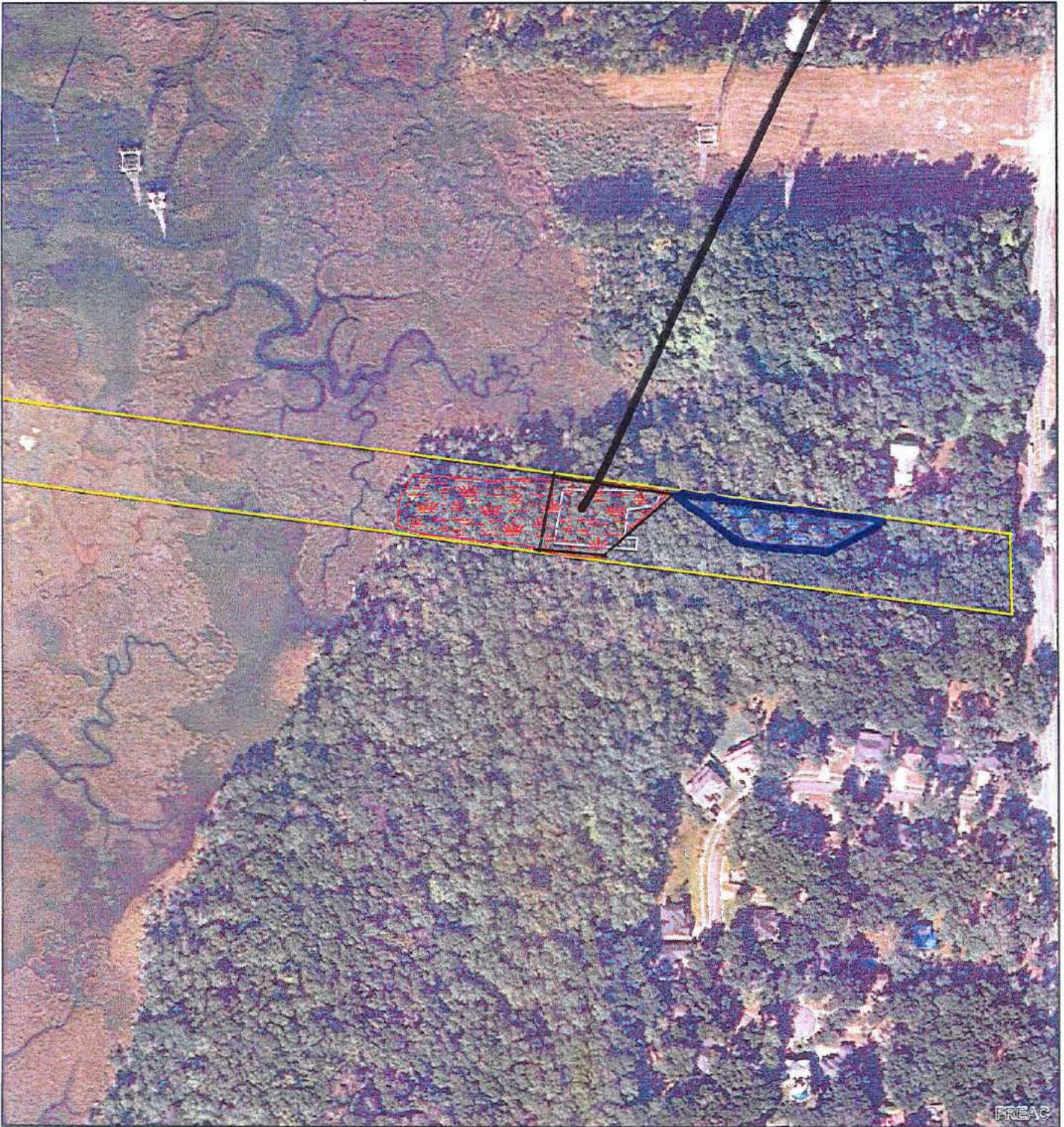
Source : FDEP - Northeast District

Created by: Chrissy Sellers

April 21, 2016




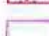
Item D: Proposed Fill

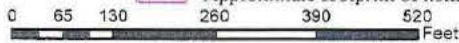
Proposed Fill



This map is for informational purposes only and it does not bind the Department, its agents, or employees, nor does it convey any legal rights expressly or implied.



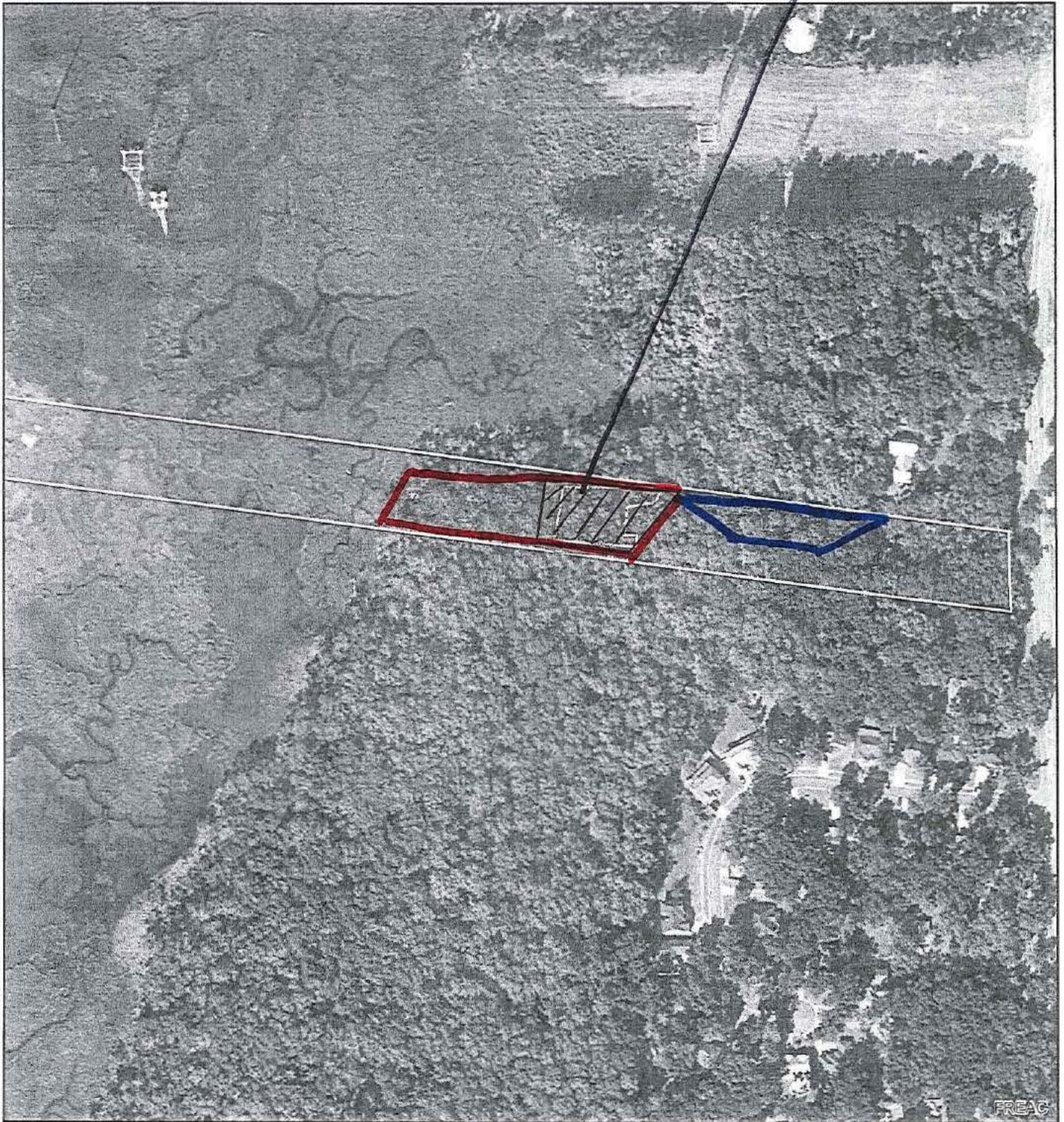
-  Approximate jurisdictional wetland boundary- not filled
-  Approximate property boundary
-  Approximate jurisdictional wetland boundary- unauthorized fill area 1.06 acres
-  Approximate footprint of home



Source : FDEP - Northeast District
Created by: Chrissy Sellers
April 21, 2016

Item D: Proposed Fill B+W

Proposed Fill



This map is for informational purposes only and it does not bind the Department, its agents, or employees, nor does it convey any legal rights expressly or implied.



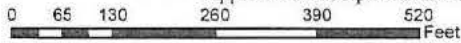
Approximate jurisdictional wetland boundary- not filled

Approximate property boundary



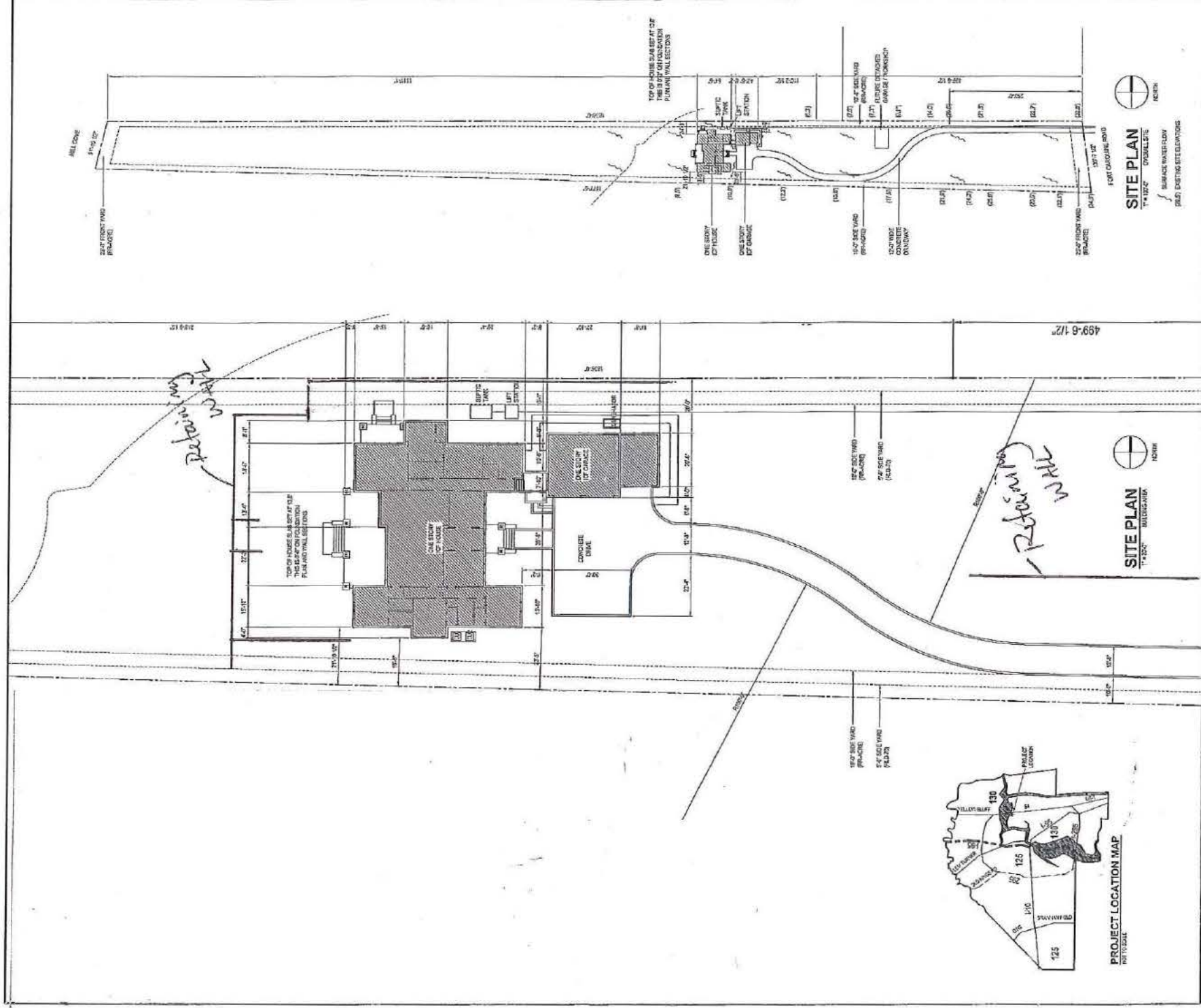
Approximate jurisdictional wetland boundary- unauthorized fill area 1.06 acres

Approximate footprint of home



Source : FDEP - Northeast District
Created by: Chrissy Sellers
April 21, 2016

Item B: Proposed Site Plan and Adjacent Site Features



Adjacent site
Features



Adjacent site
Features

Single Family
Home

Wooded lot

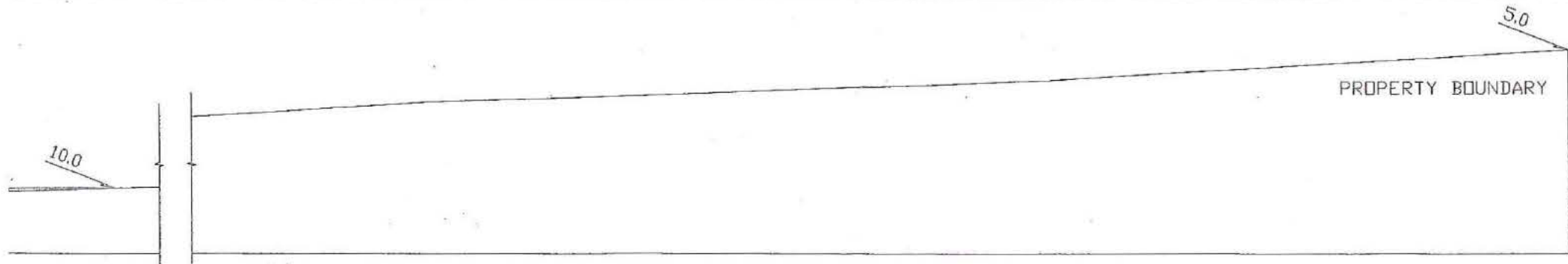
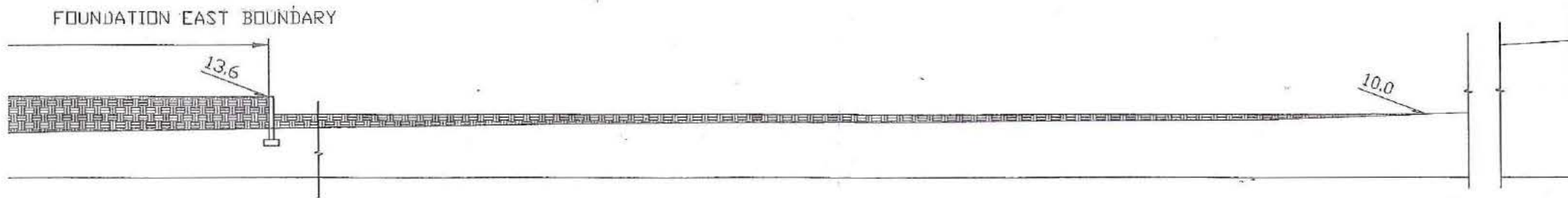
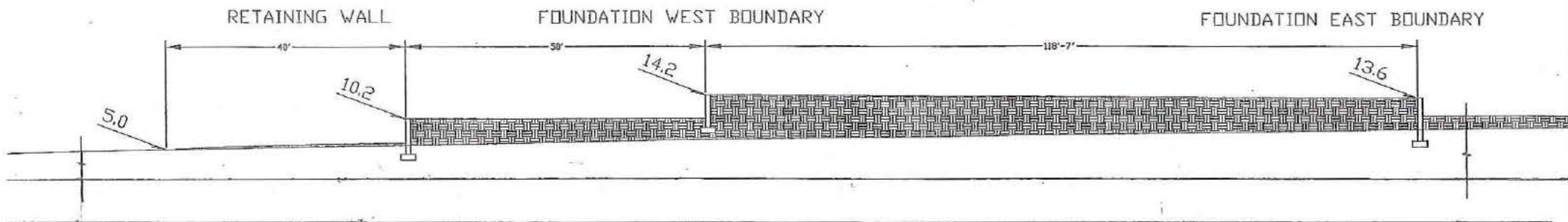
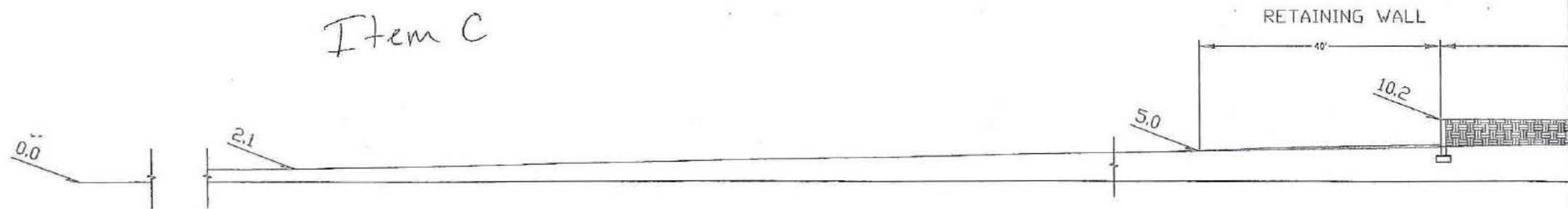
Single Family
Home

Subdivision



Page 3 of 3

Item C



THIS DRAWING IS THE PROPERTY OF THE ENGINEER AND IS NOT TO BE REPRODUCED OR COPIED IN ANY MANNER WITHOUT THE WRITTEN PERMISSION OF THE ENGINEER.

11405 Fort Caroline Road
Jacksonville, FL 32225

REVISION
JOB # 1-001
SCALE: NTS
S1.1